

بِسْمِ اللّٰهِ الرَّحْمٰنِ الرَّحِیْمِ

COMPANY PROFILE
OF
AIM SOURCING BANGLADESH

GARMENTS ACCESSORIES MANUFACTURER AND SUPPLIER



Vision & Mission

Our Vision:

To be referred as the most favorable company in the garments accessories and security Alarm Tag industries.

Our Mission:

Our mission is to manufacturing and supply the best to the respected buyers.

- * Striving to meet the increasing and diversified demands of the customers.
- * Being market leaders in defend market segments.
- * Providing quality products & reliable services and sourcing from reputed manufacturers.
- * Becoming professional marketing partners for our principals to meet the objectives of sales, market information, and customer service.
- * Being the preferred supplier of our customers, with our products exceeding their quality requirements.

INSIDE OF THE COMPANY

Our Business Keys -

- A. Best price
- B. Best Quality
- C. On time delivery

Business Policies-

- A. Mutual trust & benefit
- B. Win-Win situation
- C. Stand on commitment

Our Strengths-

- A. Customer's satisfaction
- B. Customer's loyalty
- C. Technology

COMPANY DETAILS

PROPRIETOR	Md Atikur Rahman
ADDRESS	House# 13, Road # E-03, Block-G, Eastern Housing, Mirpur-12,Dhaka-1216.
TEL NO.	+8801923-734805
E-MAIL	aimsourcingbd@gmail.com
MANAGING PARTNER	Shamim Mahmud
CONTACT NO	+880 1672-935533
EMAIL	aimsourcingbd7@gmail.com
LEGAL STATUS	Private Company
TIN	643082558762
BUSINESS IND NO	001069717-0401
E TRADE LINCENCE NO	TRAD/DNCC/038904/2022

BANK DETAILS

BANK DETAILS 01	Account name: Aim Sourcing Bangladesh Account number: 13881220212836 Uttara Bank Ltd.Pallabi Branch,Mirpur 11, Dhaka- 1216. Bangladesh. Swift : UTBLBDDH457.
BANK DETAILS 02	Account name: Aim Sourcing Bangladesh Account number: 407211100000139 Shahjalal Islami Bank,Pallabi Branch,Mirpur 12, Dhaka- 1216. Bangladesh

KEY CUSTOMERS

- ❖ **Nomination of Buyer- NKD**

- ❖ **Regular Buyer :**

- ❖ Cora, Zara, Alcot, Pizza Italia, LPP, Tesco, Mundo Dos,
- ❖ Spark Factory/Boyz Group, Sunai,
- ❖ Wibra.Cheeroki, Homla.

- ❖ **Factories :**

- ❖ Zaber & Zubaer Fabrics Ltd, Shonest Group, Loyal Apparels Ltd,
- ❖ Mimo Fasions, Mitali Group,
- ❖ Romo Fashions Today Ltd, Tosa Creations, Shirshir Group,
- ❖ Momo Fashions Ltd. Premier 1888 Ltd.

- ❖ **Buying House :**

- ❖ Asia Sourcing Ltd, Eurotex BD, HTMS Fashions, CLT BD,

Product Range

- ✘ Security Alarm Tag
- ✘ Security Label Tag
- ✘ Super Tag
- ✘ Hard Tag
- ✘ RF Label Tag
- ✘ RF Paper Tag
- ✘ RFID Tag
- ✘ AM Label Tag
- ✘ Hard tag we imported from china and Singapore. All types of Label Tag manufacturing in our unit.

MACHANIRIES

✘ LABEL TAG MACHINE -03 SETS.

✘



✘ Smart Label (EAS, RF AM) Fold & Seal Machine Production Capacity: 2,00,000 Pcs /Per day

RFID LABELS & TAGS

RFID Sticker Labels



RFID Functional Labels



RFID Tags



EL094 RFID Bottle Tag



EL086L RFID Tag with Lanyard



EL09 RFID Mini Tag



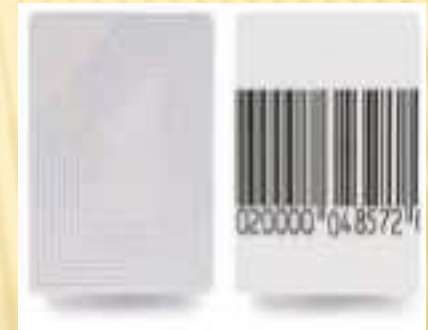
AM Soft Labels



AS075 AM Curve Label

AS076 AM Curve Label

RF Soft Labels

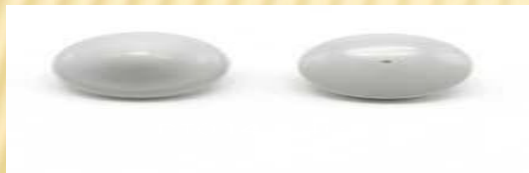


RS027 Jewelry Label

Square Tags



Round Tags



Pencil Tags



AT051 Mini Pencil Tag



AT053 Round Pencil Tag



AT055 Flat Mini Pencil Tag



AT058 Flat Midi Pencil Tag



AT059 Flat Mini Pencil Tag



AT061 Ramble Tag



AT075 Mini Triangle



AT070 Mini Delta

Ink Tags



IT182 Ink Tag



IT183 Ink



Ink Pins



IP152 Square Ink Pin



IP153 Oval Ink Pin



Pin



IP161



Product Range

Inhouse Product:-

- 01. Printed Label:-** Ribon: Paper, Satin, Satin Both Side, Cotton
- 02. Offset Print Item:-** Hangtag, Photo inlay, Sticker, Barcode Sticker, Price Ticket, Button box, Transperent Sticker, Heat Transfer sticker, Size Sticker,

We also Supply :-

- 01. Polyester Button:-** (Chalk, Pearl, Horn, TPT, Shell & Fancy Button), Sizes: 8mm to 37.50mm (13l to 60l), Design: (Logo & Non Logo)
- 02. Elastic:** Normal, Jackard, Oven
- 03. Belt:** Lether, Fake Lether, Twill Fabric, Others
- 04. String, Lock, 05. Woven Lavel 06. Poly, 7. Twill Tape, 8. Leather Patch, 9. Eyelet, 10. Zipper With Puller, 11. Metal Items 11. Lace, 12. Drawsting**

Sample & Bulk Production Delivery Lead Time

- | | |
|----------------------------|--|
| 01. Printed Label:- | Sample 2 (Two)Days, Bulk 4 (Four) Days after approval. |
| 02. Printed Items:- | Sample 2 (Two) Days, Bulk 6-7 Days after approval. |
| 03. Button:- | Sample 4 (Four) Days, Bulk 10 (Ten) Days after approval. |
| 04. Woven Labels:- | Sample 2 (Two)Days, Bulk 7 (Seven) Days after approval. |
| 05. Poly Bag | Sample 4(Four) Days, Bulk 6-7 Days after approval. |

(Note: For Large Qty. order, bulk production lead time will differ from above information.)

Machineries Details:-

Printed Label Section

01. Flexo Label Printing Machine (4+1 Color)

Machine Brand: HY

Country Of Origin China

02. Rotary Label Printing (6+1color)

Machine Brand: HY

Country Of Origin China



***** We also have ribbon cutting & curing machine *****

Offset Printing Section

01. MO Offset Printing Machine

Machine Brand: Heidelberg mac (48 cm x 65 cm)

Country Of Origin Germany



02. GTO Offset Printing Machine

Machine Brand: Heidelberg mac (36 cm x 52 cm)

Country Of Origin Germany



03. Die Cutting Machine (Dimy & Double Dimy)

Country Of Origin China



04. Polar Paper Cutting Machine

Machine Brand: Heidelberg

Country Of Origin Germany



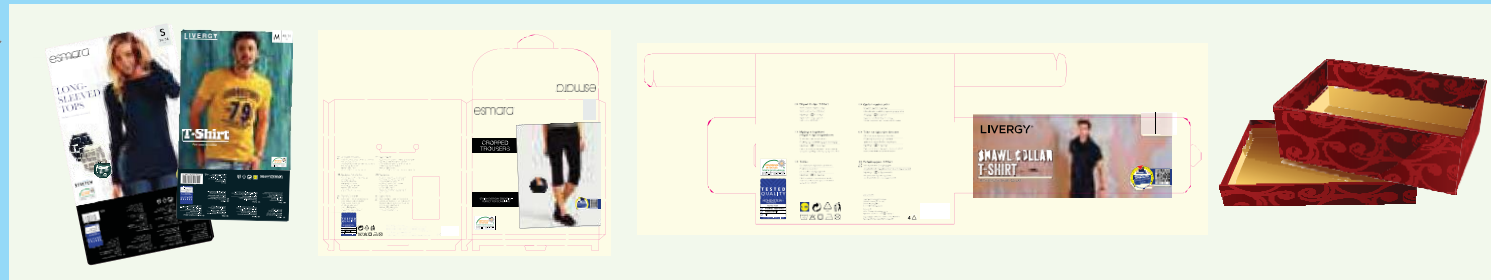
Hang Tag

- Price tag
- Barcode tag
- Clip Tag
- Info Tag
- Inner Tag
- Security Tag



Photo Card

- Photo Box
- Photo inlay
- Band Roll



Back Board

- Neck Board
- Back Board
- Neck Band



Printed Label

- Care Label
- Main Label
- Size Label
- Barcode Label



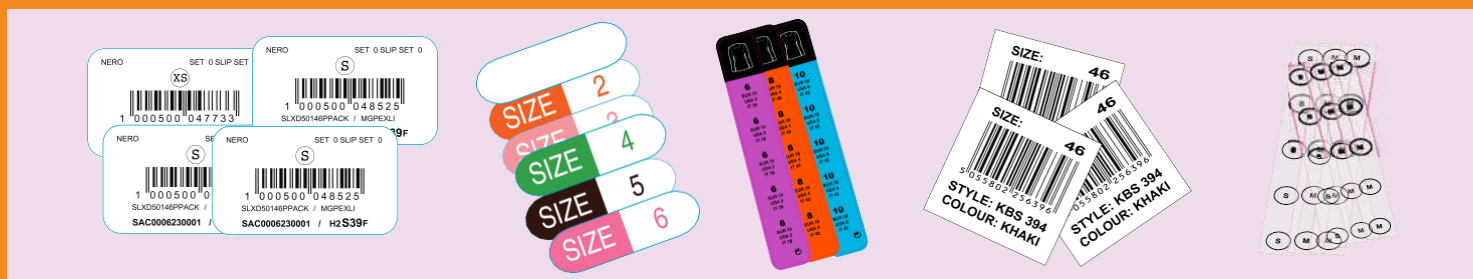
Woven Label

- Woven Main Label
- Woven Size Label



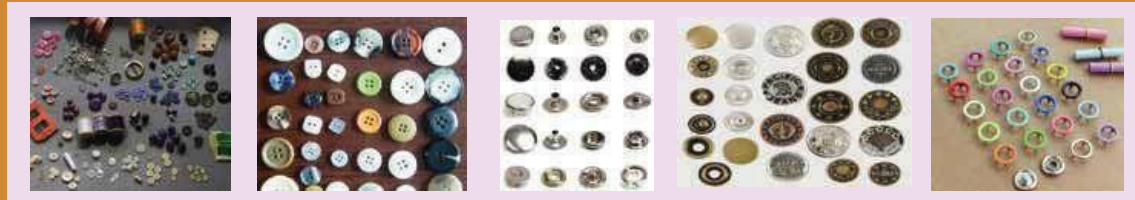
Sticker

- Barcode Sticker
- Transferants Sticker
- Size Sticker
- Hnger Sticker



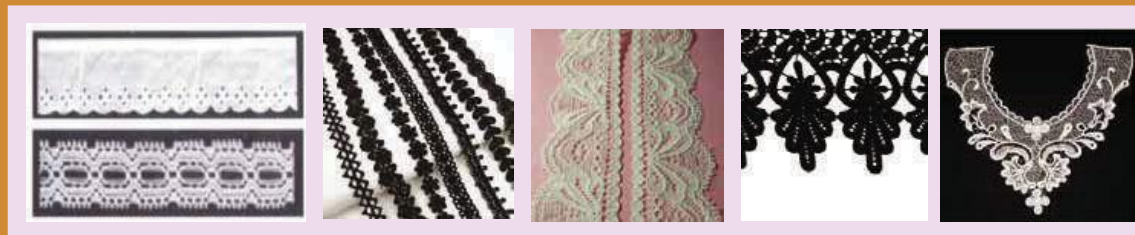
Button

- Chalk & Horn Button
- Shell & Pearl Button
- Logo Button
- Metal Button
- Ring Snap Button
- All Button



Lace

- Cotton Lace
- TC Lace
- Tricot (Spandex)Lace
- Tricot (Non Spandex)Lace
- Elastic Lace
- Neck Lace
- Fabric Lace
- All Lace



Elastic

- Jacquard Elastic
- Needle Elastic
- Crochet Elastic
- Picot Elastic
- Lace Elastic
- Striped Elastic
- Button Hole Elastic



Drawstring

- Round Drawstring
- Flat Drawstring
- Tube Drawstring
- Elastic Drawcord
- Automatic Tipping



Twill Tape

- Herringbone Tape
- Canvas Tape
- Narrow Tape
- Flat Tape
- Striped Tape



Gum Tape

- Transferant Gum Tape
- Brown Gum Tape
- Printed Tape
- Paper Gum Tape



Poly

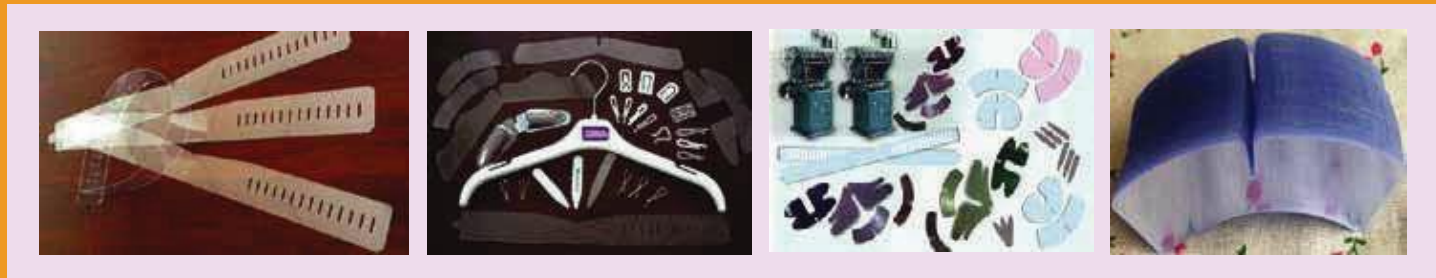
- Blister Poly Bag
- Single Poly Bag
- Zip Poly Bag
- Hook Poly Bag
- Hanger Poly Bag
- Printed Poly Bag
- LDPE, LLDPE, PP, PE, PVC Poly Bag



Heat Transfer



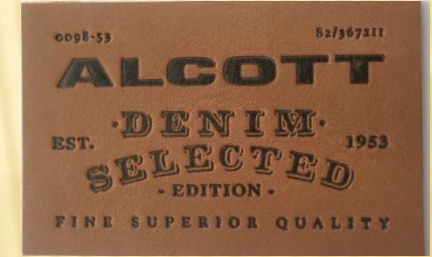
Collar Bone



Lather Patch



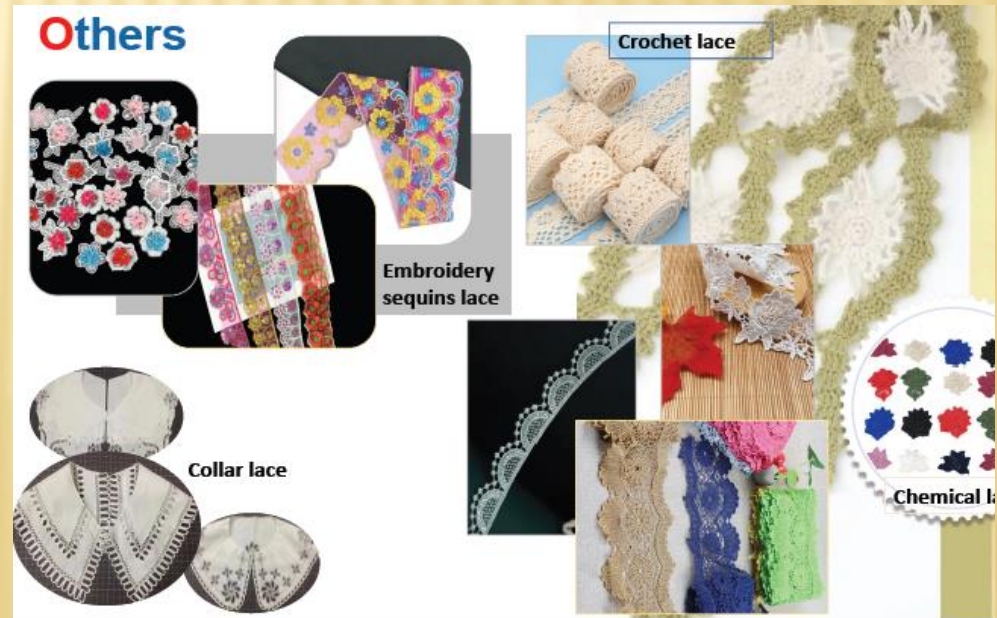
LEATHER PU PATCH AND BELT



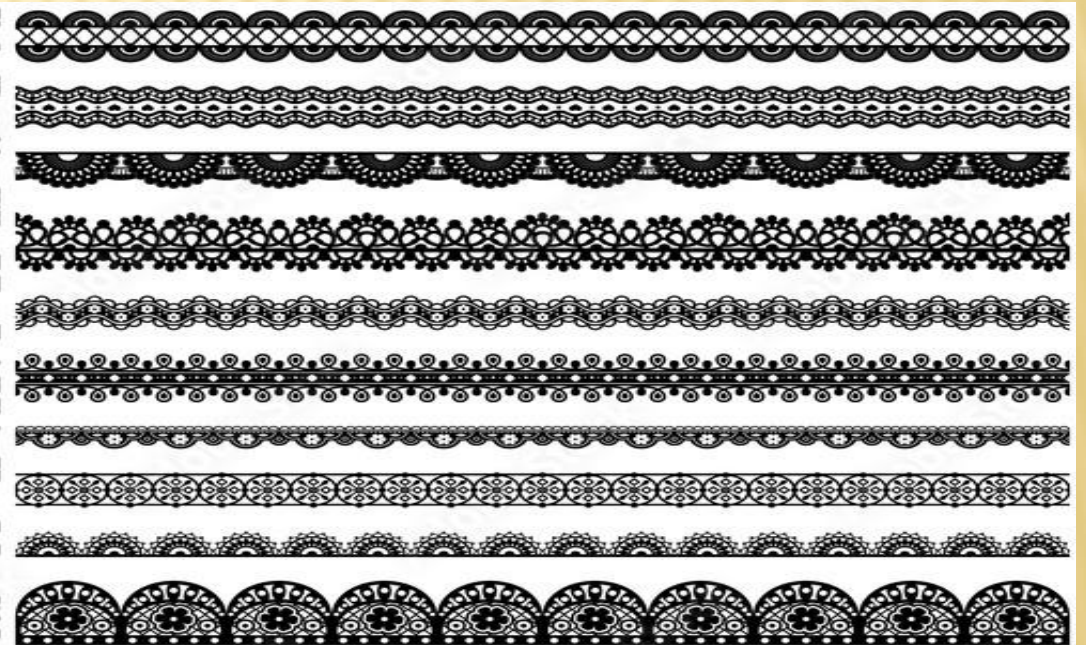
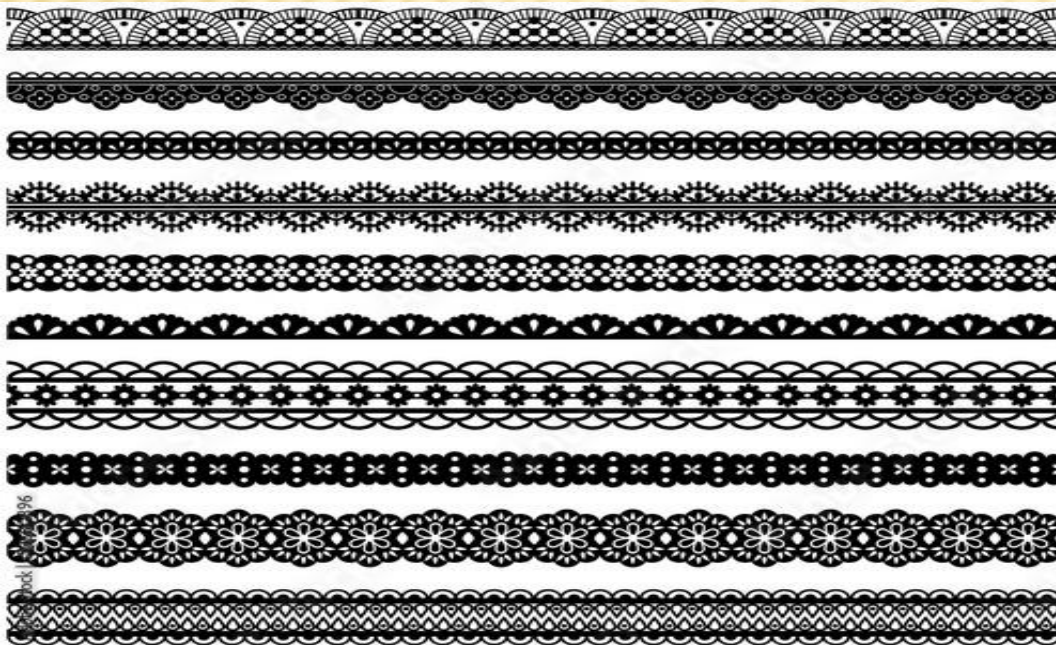
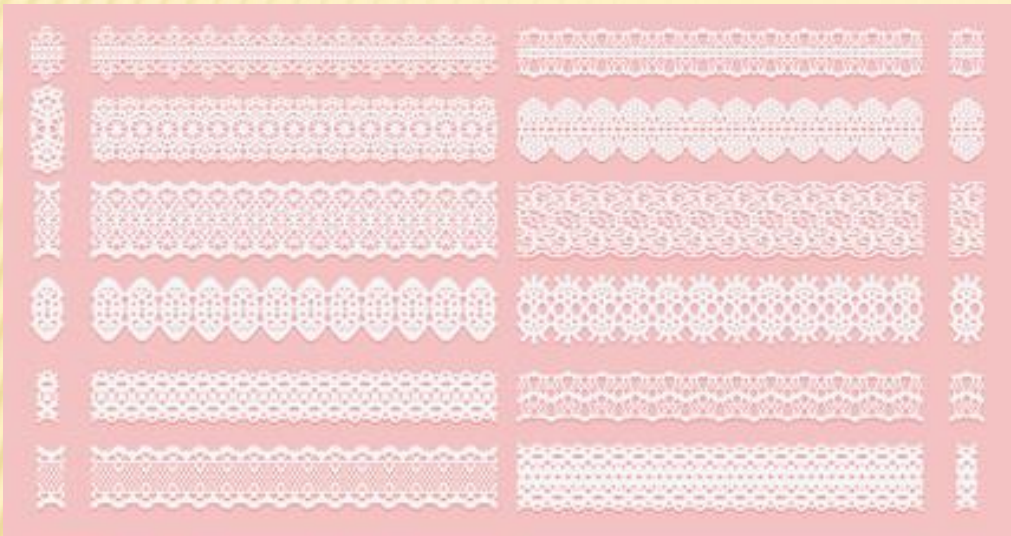
JENUINE/PU LEATHER BELT



ALL KINDS OF LACE



ALL KINDS OF LACE





THANK YOU